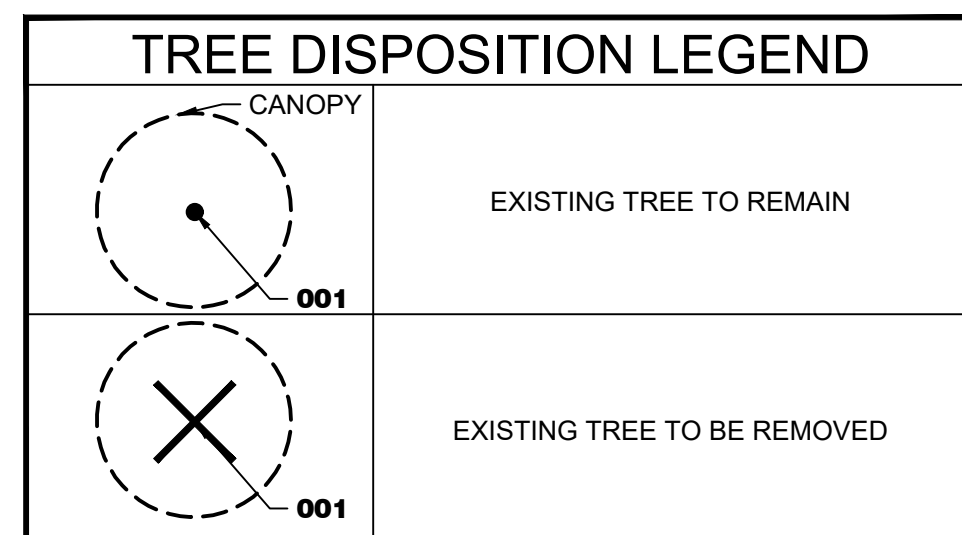
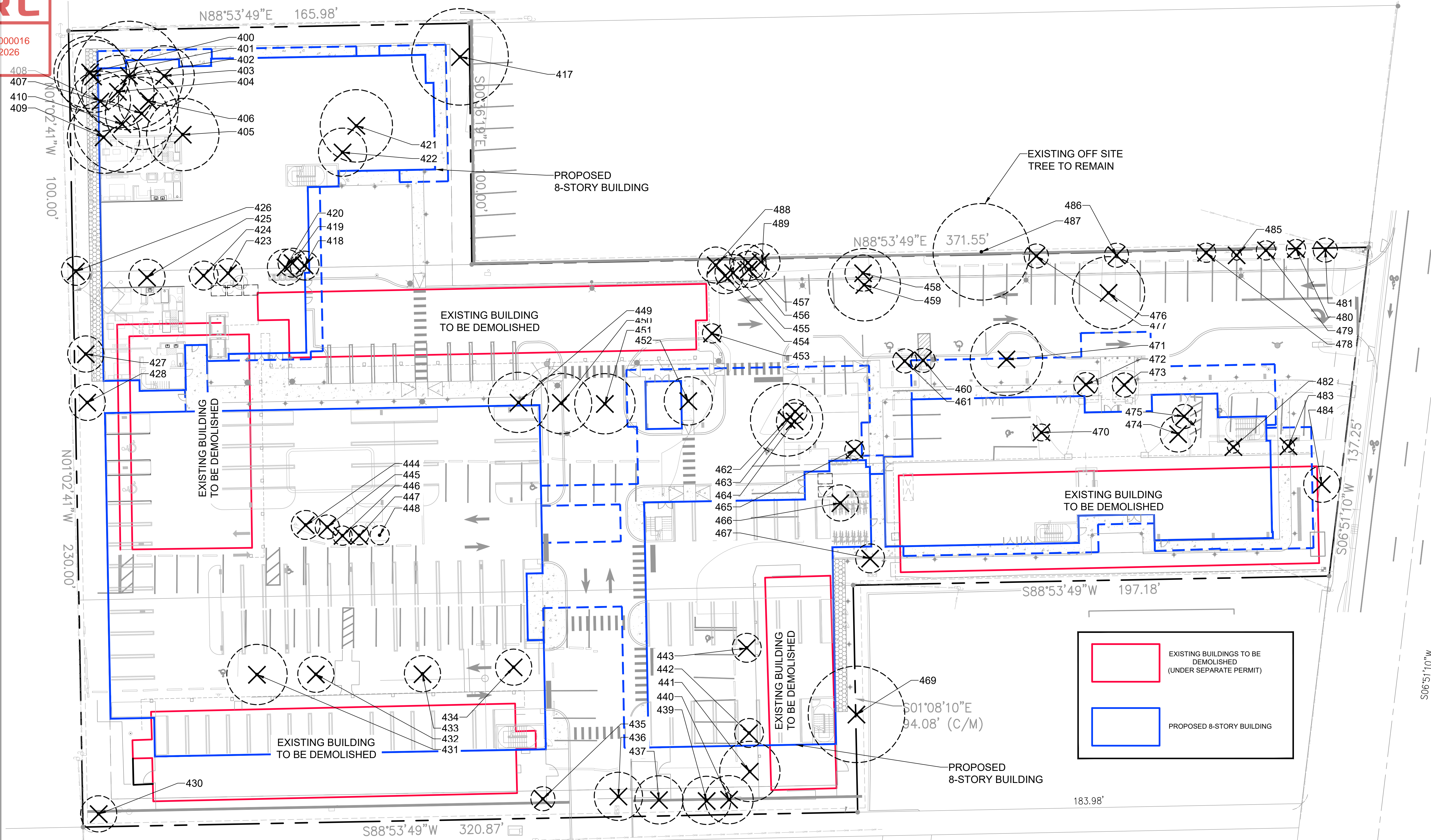


THE SATORI
4211 N FEDERAL HIGHWAY
POMPANO BEACH, FL

TREE DISPOSITION SUMMARY	
NON-SPECIMEN TREES TO BE REMOVED	9 TREES (101 INCHES)
SPECIMEN TREES TO BE REMOVED	1 TREE (18 INCHES OR \$3,413)
PALMS TO BE REMOVED	58 PALMS (\$45,604)

NOTE: DEAD AND INVASIVE TREES NOT INCLUDED IN CALCULATIONS

TREE MITIGATION SUMMARY		
	REQUIRED	PROVIDED
NON-SPECIMEN TREE REPLACEMENT	101 INCHES	120 INCHES (ED-M, TH-M, TD-M)
SPECIMEN TREE REPLACEMENT VALUE (TREE 476: 18 INCHES)	\$3,413	\$3,750 (PU-M)
PALM REPLACEMENT VALUE	58 PALMS (\$45,604)	58 PALMS (\$53,875) (AM-M, PR-M, PS-M, RR-M, SP-M, VM-M)

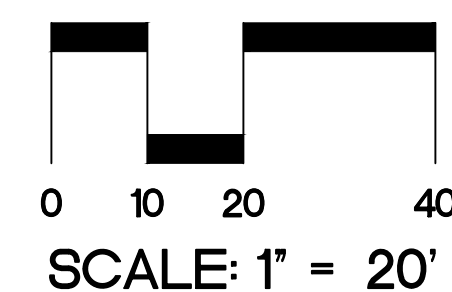
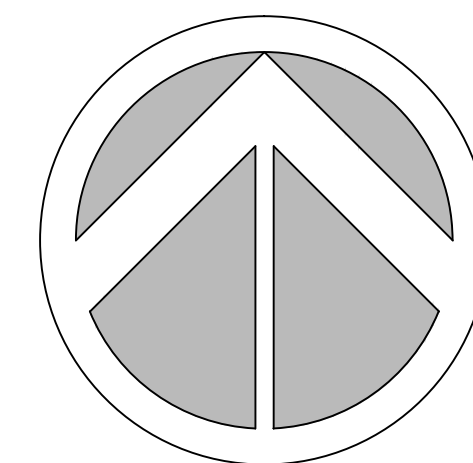
NOTES:

- TREE MITIGATION WAS CALCULATED PER SECTION 155.5204.E OF THE LAND DEVELOPMENT CODE
- MITIGATION TREE AND PALM LOCATIONS AND SPECIFICATIONS SHOWN ON LANDSCAPE PLANS
- SPECIMEN TREE VALUE DETERMINED PER THE TRUNK FORMULA METHOD TREE APPRAISAL. SEE ATTACHED TREE APPRAISALS.
- SPECIMEN TREE REPLACEMENT VALUE CALCULATION: \$3,750
(1) SCREW PINE (14' HT) = \$1,500 RETAIL x 2.5 MULTIPLIER = \$3,750 EA = \$3,750
- PALM REPLACEMENT VALUE CALCULATION: \$53,875
(10) TRIPLE CHRISTMAS PALMS @ 8' HT = \$150 RETAIL x 2.5 MULTIPLIER = \$375 EA x 10 = \$3,750
(11) TRIPLE PYGMY PALMS @ 8' HT = \$150 RETAIL x 2.5 MULTIPLIER = \$375 EA x 11 = \$4,125
(2) SYLVESTER DATE PALMS @ 12' CT = \$1,500 RETAIL x 2.5 MULTIPLIER = \$3,750 EA x 2 = \$7,500
(7) ROYAL PALMS @ 14' GW = \$1,650 RETAIL x 2.5 MULTIPLIER = \$4,125 EA x 7 = \$28,875
(23) SABAL PALMS @ 22' HT = \$175 RETAIL x 2.5 MULTIPLIER = \$437 EA x 22 = \$9,625
- PROPOSED TREES/PALMS USED TO MEET MITIGATION REQUIREMENTS ARE THOSE ABOVE AND BEYOND LAND DEVELOPMENT REQUIREMENTS. SEE REQUIRED TREE CALCULATIONS ON SHEET L-4.

MITIGATION TREES

TD-M	Bald Cypress
AM-M	Christmas Palm
ED-M	Japanese Blueberry Tree
TH-M	Pink Tabebuia
PR-M	Pygmy Date Palm
RR-M	Royal Palm
SP-M	Sabal Palm
PU-M	Screw Pine
PS-M	Sylvester Date Palm

SEE SHEET L-4 FOR FULL PLANTING SCHEDULE



SCALE: 1" = 20'

Sheet Title
TREE
DISPOSITION
PLAN

Revision Dates	COMMENTS
10/27/25 - CITY	
12/16/25 - CITY	

Date
12/16/2025Sheet Number
L-1

Seal

STEPHEN M. PECCIA, P.L.A.
LA 6667289